

GY-HM620 / 660 / 606 How to update the firmware

NOTE

- (1) Attach both AC Adapter and Battery when updating.
- (2) Disconnect/Remove USB cable, Video cables (HDMI, SDI, A/V, etc), other cables except AC Adapter.
- (3) Do NOT power off during updating
- (4) It takes about 3 minutes for updating
- (5) After Firmware update, please go to System Menu and proceed a system reset.
This operation will be necessary for a proper update of your camcorder.

Preparation (Copying firmware to SD/SDHC memory card)

NOTE: Do NOT use SDHC memory card for recording. In case of using SDHC memory card, Format it with Camera.

- (1) Download the target file onto your PC from the download site and unzip it. (Double click it since it's a self extract file)
- (2) Insert the SD/SDHC memory card into your PC (or card reader) and confirm No file exists in the card. If files exist,
- (3) Copy the unzipped files onto the SD/SDHC memory card, and confirm the directory in the card as follows;

In case of GY-HM620, [¥PRIVATE¥JVC¥GY-HM620](#)

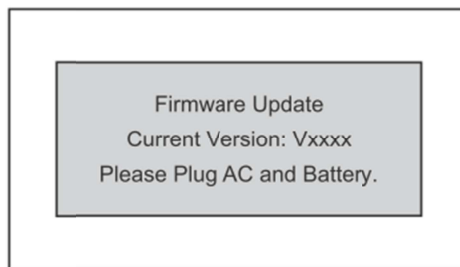
In case of GY-HM606, [¥PRIVATE¥JVC¥GY-HM620](#),

In case of GY-HM660, [¥PRIVATE¥JVC¥GY-HM660](#).

How to update

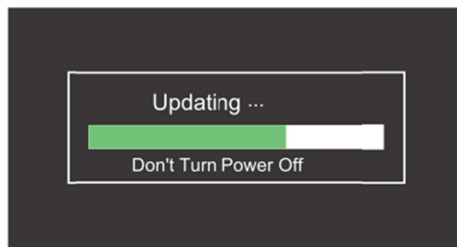
- (1) Check that the power switch is come by OFF. While pressing the [FOCUS PUSH AUTO] and [MENU/THUMB (side)] buttons, turn ON the power. The version of the present firmware is displayed on LCD.

LCD screen



- (2) Insert the SD/SDHC memory card into the card slot B. (Can not be updated with slot A.)
- (3) The updating is started automatically, after the SD/SDHC memory card was inserted. A progress bar is displayed on LCD during update. SLOT A LED goes out and SLOT B LED carries out red blink irregularly.

LCD screen



- (4) After update is completed, it is displayed on LCD as "Complete". (Update time is about 3 minutes.) SLOT A LED and SLOT B LED carry out green blink simultaneously slowly.

LCD screen



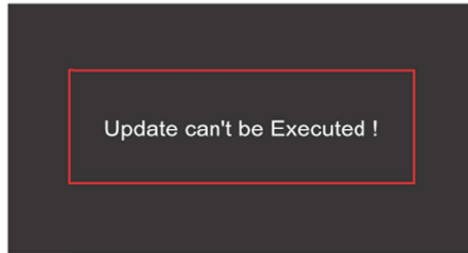
(5) Remove the SD/SDHC memory card.

(6) Update is ended. Remove an AC adaptor and a battery.
Turn OFF the power and turn it ON again.

When update cannot be performed

When update cannot be performed by a certain cause, it is displayed to LCD as "Update can't be Executed !".
SLOT A LED and SLOT B LED blink by turns.

LCD screen

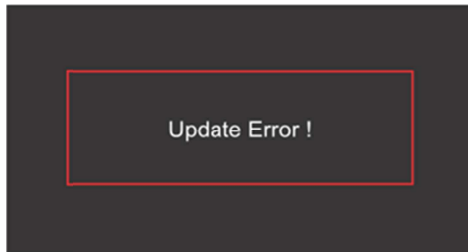


In this case, check whether an update file is a thing of an applicable model.

Update error

When update cannot be performed by a certain cause, it is displayed to LCD as "Update Error !".
SLOT A LED and SLOT B LED blink by turns.

LCD screen



In this case, there is possibility of failure of apparatus.